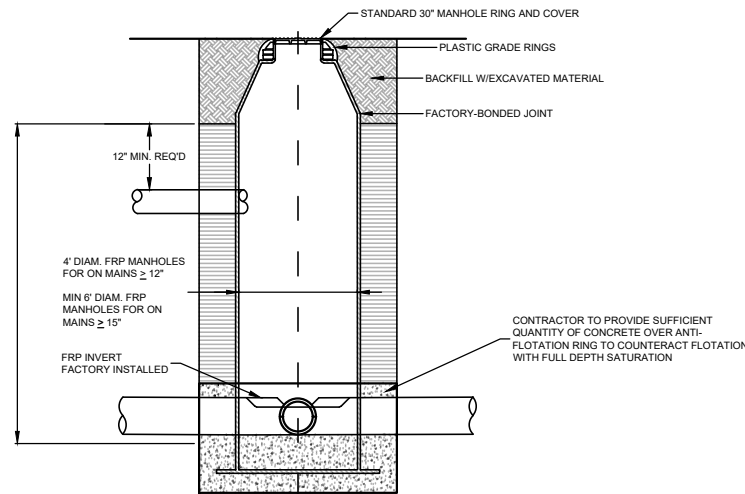
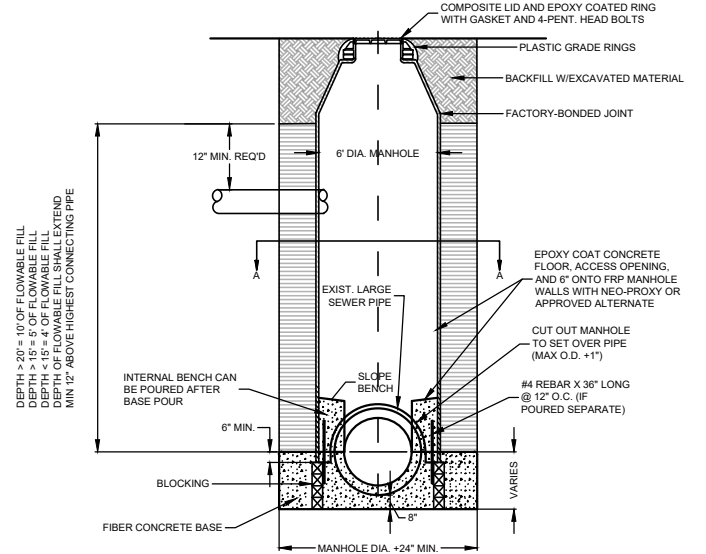


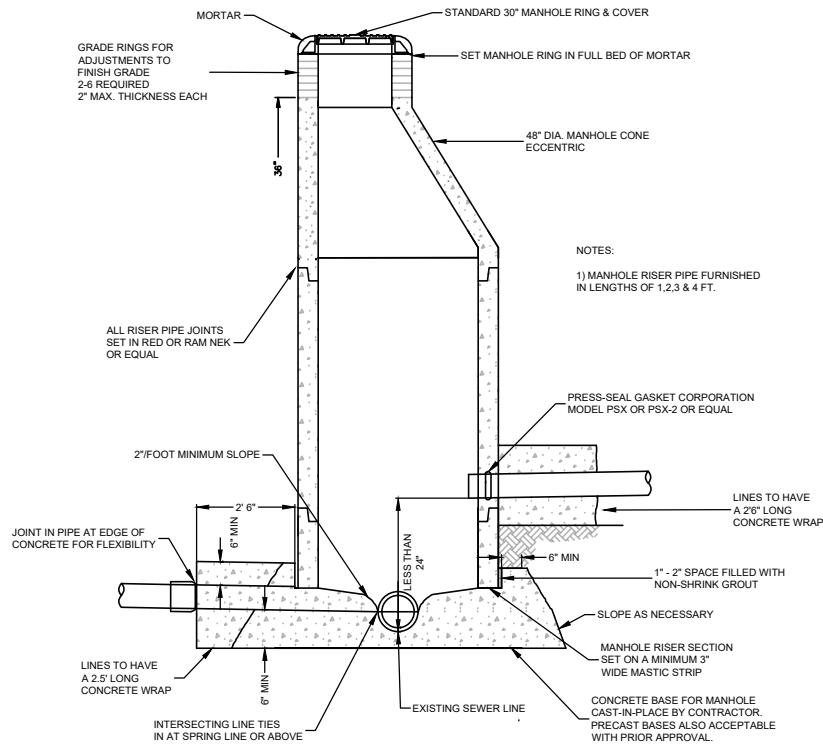
FIBERGLASS MANHOLE DETAIL
12" AND SMALLER MAINS



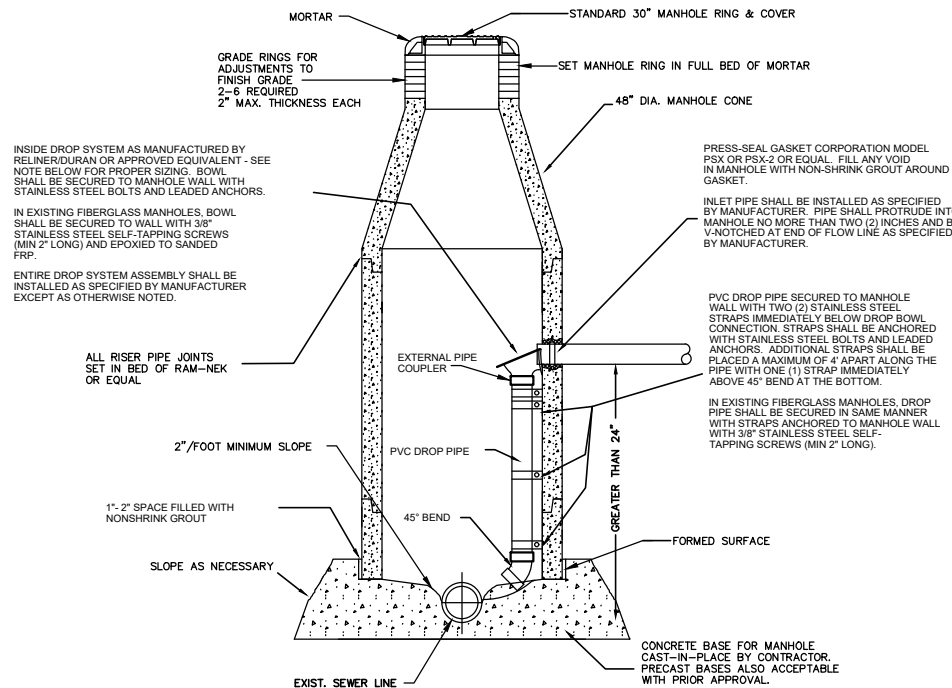
FIBERGLASS MANHOLE DETAIL
WATERTIGHT MANHOLES



FIBERGLASS MANHOLE DETAIL
15" AND LARGER MAINS



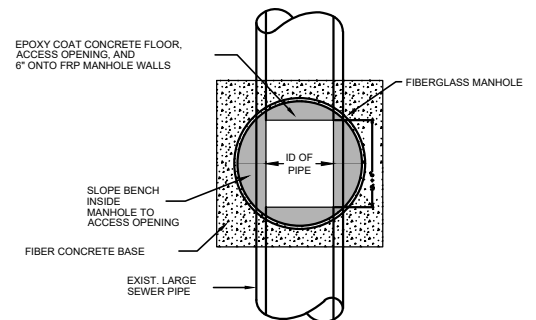
INTERSECTING LINE DETAIL



RELINER BOWL SIZING NOTES:

- 1) "A" BOWL WITH 4" OUTLET WILL SERVICE UP THROUGH FULL 6" INLETS.
- 2) "A" BOWL WITH 6" OUTLET WILL SERVICE UP THROUGH FULL 8" INLETS OR WITH 10"/12" INLETS WITH MODERATE FLOWS.
- 3) "B" BOWL WITH 8" OUTLET WILL SERVICE UP THROUGH FULL 10" INLETS.
- 2) "B" BOWL WITH 10" OUTLET WILL SERVICE UP THROUGH FULL 12" INLETS OR WITH 15"/16" INLETS WITH MODERATE FLOWS.

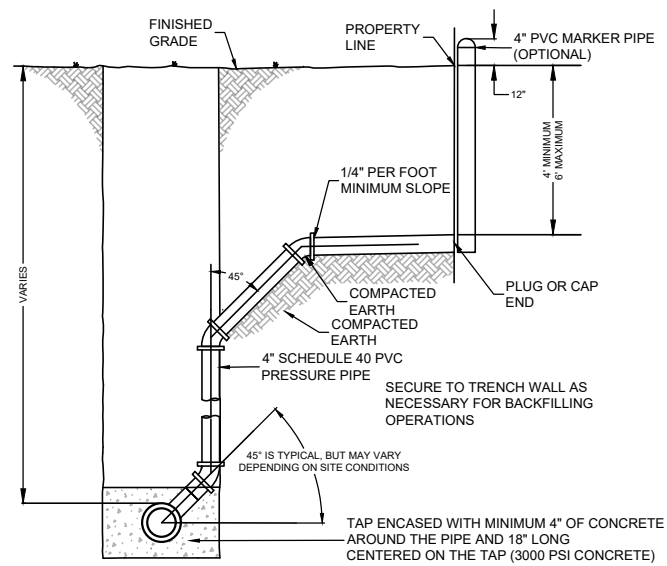
DROP ASSEMBLY DETAIL



SECTION A-A

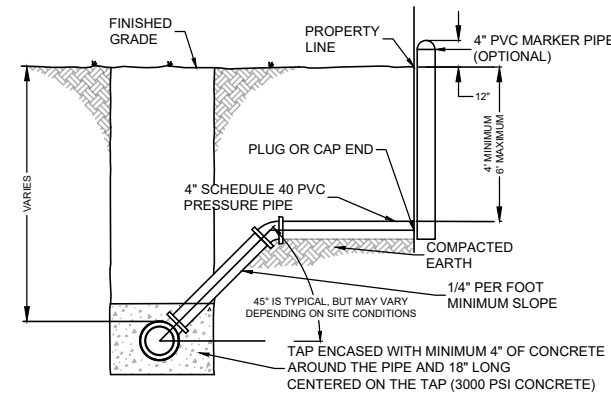
STANDARD DETAIL SHEET (WASTEWATER)			
DRAWN BY: K. C. Cook		REVISED BY: R. RICH	
APPROVED BY: Kyle Schniederjan			
PATH: K:\CAD\UT\Standards\Sewer Detail 2017.dgn			
HORZ. SCALE	NTS	DATE	1/12/2017
VERT. SCALE	NTS	DATE	8/05/2025
W.O. NO.		SHEET	SD-S-1





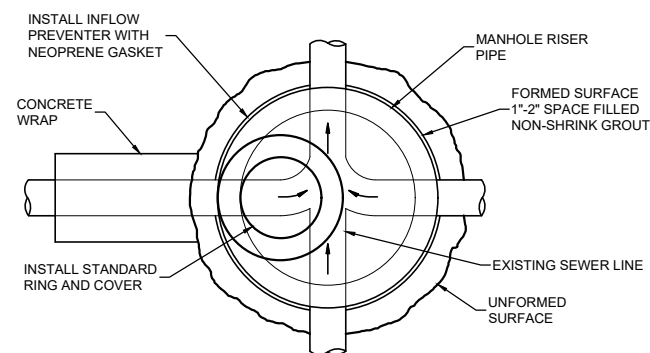
- NOTES:
- 1) TAPS 8" OR LARGER REQUIRE CONSTRUCTION OF A MANHOLE
 - 2) TAP TO BE PLACED AT THE APPROXIMATE MIDPOINT OF THE LOT BEING SERVED
 - 3) THIS DETAIL SHALL APPLY WHEN DEPTH OF SEWER MAIN EXCEEDS APPROXIMATELY 10'

DEEP SEWER TAP DETAIL

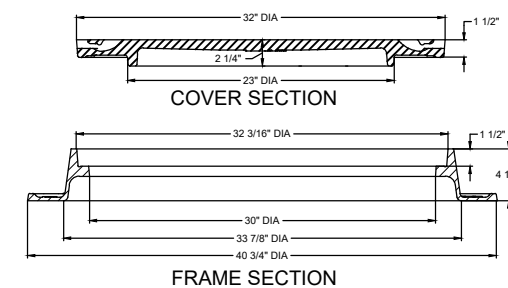
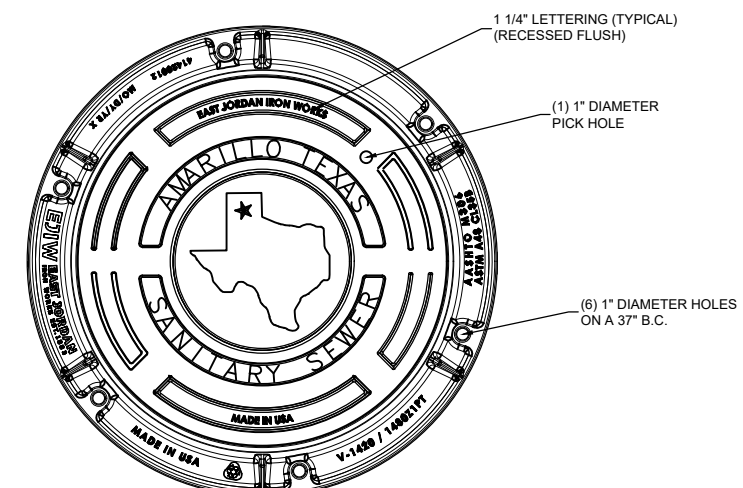


- NOTES:
- 1) TAPS 8" OR LARGER REQUIRE CONSTRUCTION OF A MANHOLE
 - 2) TAP TO BE PLACED AT THE APPROXIMATE MIDPOINT OF THE LOT BEING SERVED
 - 3) THIS DETAIL SHALL APPLY WHEN DEPTH OF SEWER MAIN EXCEEDS APPROXIMATELY 10'

SHALLOW SEWER TAP DETAIL



MANHOLE PLAN VIEW



**STANDARD
30" MANHOLE RING AND COVER**

STANDARD DETAIL SHEET
(WASTEWATER)

DRAWN BY: K. C. Cook REVISED BY: R. RICH

APPROVED BY: Kyle Schniederjan

PATH: K:/CAD/UTS/Standards/Sewer Detail 2017.dgn

HORZ. SCALE	NTS	DATE	1/12/2017
VERT. SCALE	NTS	DATE	8/05/2025
W.O. NO.		SHEET	SD-S-1

