

SEE INSET NOTE ABOVE



FOR VALVES WITH TOP OF NUT  
MORE THAN 8' BELOW FINAL GRADE

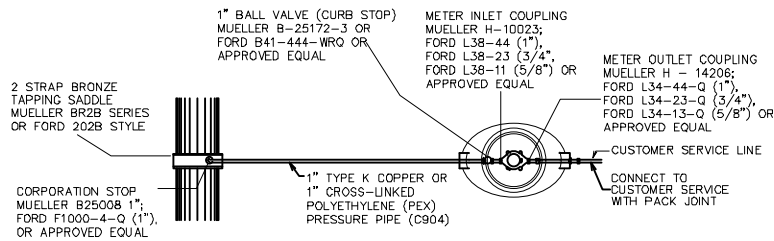


SEE INSET NOTE ABOVE

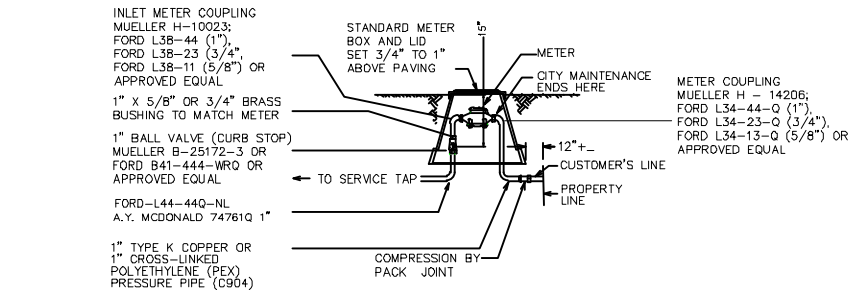


**AMARILLO**  
CAPITAL PROJECTS &  
DEVELOPMENT ENGINEERING

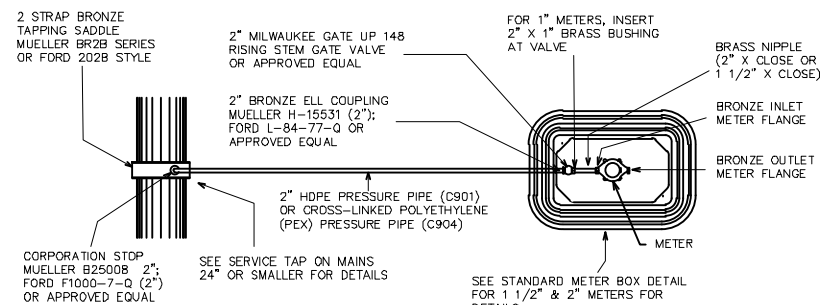




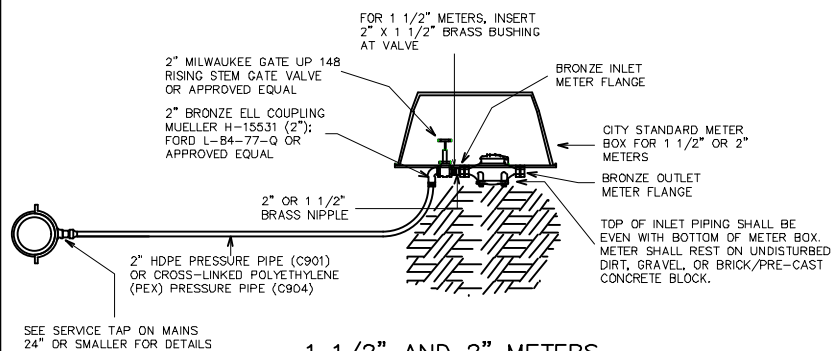
5/8", 3/4", & 1" METERS  
PLAN VIEW



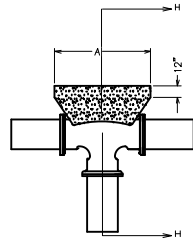
5/8", 3/4", & 1" METERS  
PROFILE VIEW



1 1/2" AND 2" METERS  
PLAN VIEW



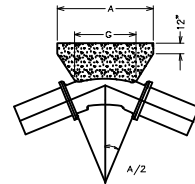
1 1/2" AND 2" METERS  
PROFILE VIEW



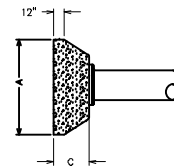
TEE THRUST BLOCKING  
NOT TO SCALE



SECTION H - H  
NOT TO SCALE

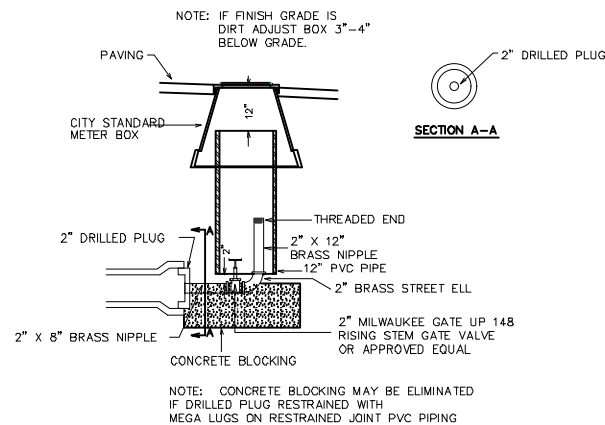


BEND THRUST BLOCKING  
NOT TO SCALE

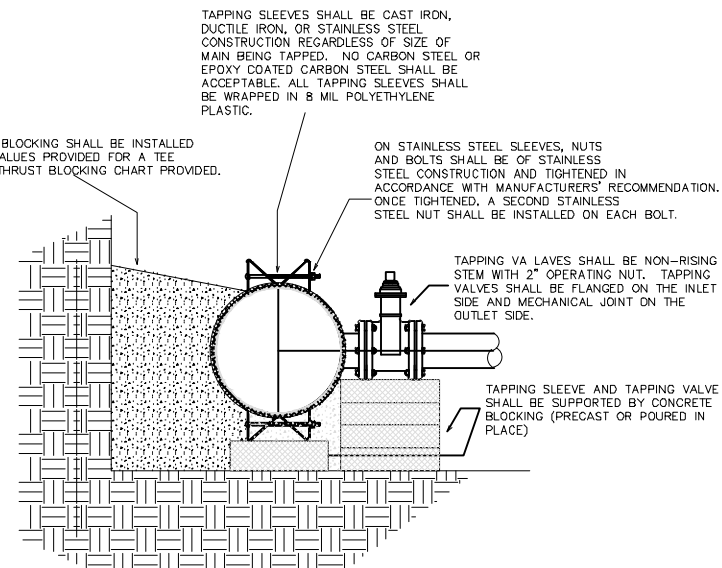


PLUG/CAP THRUST BLOCK  
NOT TO SCALE

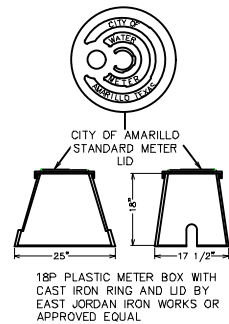
I.D. (in)	= 11.25°				I.D. (in)	= 22.50°				I.D. (in)	= 45°				I.D. (in)	= 90°				I.D. (in)	TEE/PLUG				FIRE HYDRANT				
	G (ft.)	EARTH				G (ft.)	EARTH				G (ft.)	EARTH				G (ft.)	EARTH				C (ft.)	B (ft.)	A (ft.)	VOL. (C.Y.)	I.D. (in)	C (ft.)	A (ft.)	B (ft.)	VOL. (C.Y.)
		A (ft.)	B (ft.)	VOL. (C.Y.)			A (ft.)	B (ft.)	VOL. (C.Y.)			A (ft.)	B (ft.)	VOL. (C.Y.)			A (ft.)	B (ft.)	VOL. (C.Y.)										
4, 6, 8	0.4	1.0	1.5	0.1	4, 6, 8	0.8	1.5	1.5	0.1	4, 6, 8	1.5	2.0	2.0	0.2	4, 6, 8	2.7	5.0	1.5	0.4	4, 6, 8	1.5	1.5	2.5	0.3	6	2.7	5.0	1.5	0.4
10, 12	0.6	1.5	1.5	0.1	10, 12	1.1	2.0	2.5	0.3	10, 12	2.2	3.5	2.5	0.5	10, 12	4.0	6.5	2.5	1.0	10, 12	1.5	2.5	3.5	0.6					
16, 18	0.8	2.0	2.5	0.2	16, 18	1.6	3.0	3.5	0.6	16, 18	3.2	4.5	4.5	1.2	16, 18	6.0	9.0	4.0	2.4	16, 18	2.0	4.0	5.5	1.6					



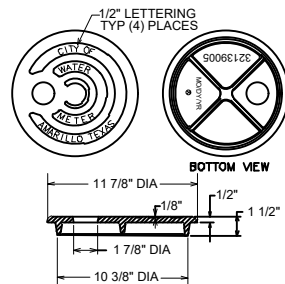
TYPICAL FLUSH VALVE INSTALLATIONS



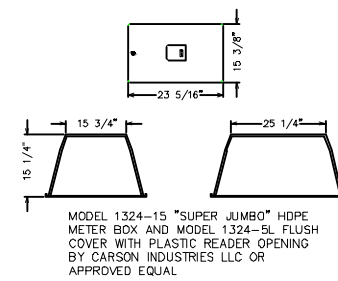
TYPICAL TAPPING SLEEVE  
AND VALVE INSTALLATION



STANDARD METER BOX DETAIL  
(FOR METERS UP TO 1")



STANDARD METER LID DETAIL  
(FOR METER LIDS WITH 1 7/8" DIA HOLE)



STANDARD METER BOX DETAIL  
(FOR 1 1/2" & 2" METERS)



PROJECT DESCRIPTION:

REVISIONS

SHEET TITLE:

STANDARD WATER DETAIL SHEET

DESIGNED BY: JERRY HUNT DATE: 4/15/24

APPROVED BY: JACKSON ZAHARIA SCALE: N/A

PROJECT NO:

SHEET NO:

2 OF 2