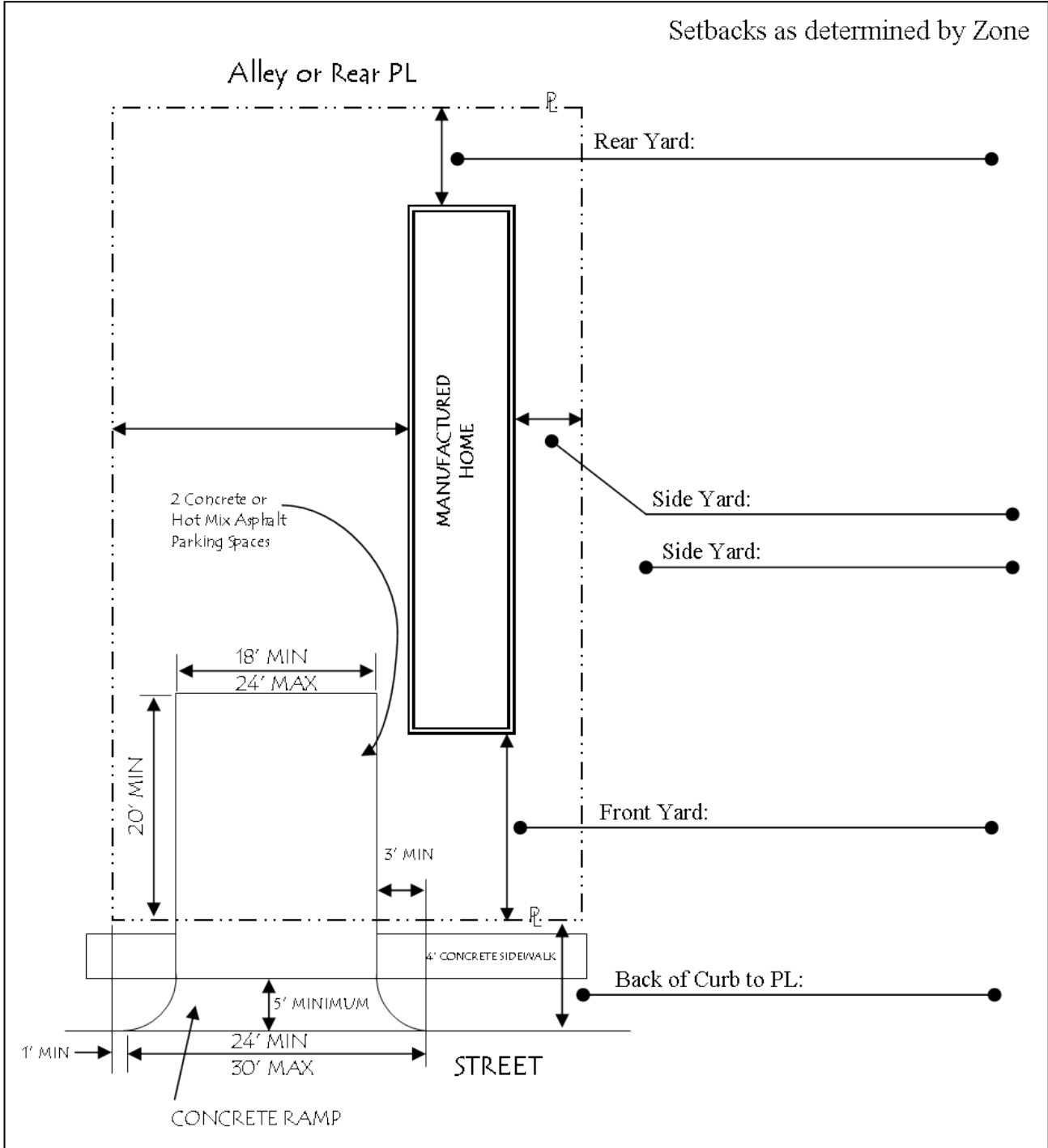


Manufactured Home Additional Information

Site Plan Example



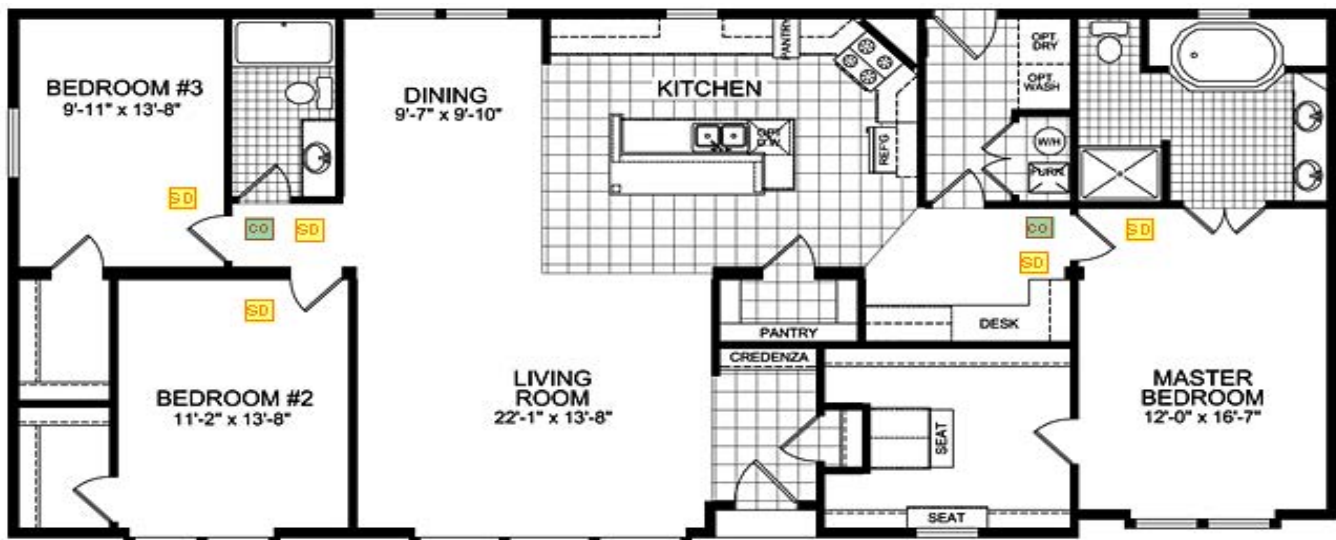
Stair Example

Sectional and Stairs Detail

A	Size	Notes
B		Span
C		Post Size - 4x4 Min. Spacing O.C. - Min. based on snow loads
D		Joist Size - 2x6 Min. Spacing O.C. - Min. based on snow loads
E		Floor Material - 2x plywood or other
F		Finished Grade to Finished Deck Surface
H		Minimum 36" high guardrail throughout
J		Handrail - 34" to 38" from nose to rail
K		Landing - Minimum 36" with 2% slope max
L		Inside Riser Height - Can be open if less than 4"
M		Run - 10" Minimum (>11" nosing not required)
Notes		Rise - 4" minimum and 7 3/4" maximum

- Nosing shall be 3/4"-1 1/4" on treads less than 10"
- Stairs and Landing must be minimum 36" wide
- Length of run and height of riser shall not vary more than 3/8"
- All beam splices must occur over post with minimum 1 1/2" clearance

Carbon Monoxide and Smoke Detector Example



- SD Smoke Detector
- CO Carbon Monoxide Detector

- > Detectors may be battery operated.
- > Detectors should be placed high on the wall or ceiling.
- > Avoid placing detectors near air conditioning vents and filter grills. If no other location is possible try to install the detector a few feet away from the grills.



808 S. Buchanan St.
Amarillo, TX 79105

PHONE (806) 378-3041
 FAX (806) 378-3085
 E-MAIL building@amarillo.gov
 WEB SITE amarillo.gov